

# INVASIVE SPECIES

# BEST MANAGEMENT PRACTICES

SIMPLE STEPS TO PREVENT THE SPREAD OF INVASIVE SPECIES IN BRITISH COLUMBIA



## KEEP CLEAN ON WATER

**"CLEAN, DRAIN, DRY"**

Thoroughly clean, drain and dry your watercraft and all your gear after use.

## KEEP CLEAN ON LAND

**"WORK, CLEAN, GO"**

Clean all vehicles, animals, equipment, and yourself.  
Store equipment and vehicles away from invasive plants.  
Know which invasive species are present at your work site.  
Mow carefully.



## LIMIT DISTURBANCE

**EXPOSED SOIL CAN LEAD TO THE PROLIFERATION OF INVASIVE PLANTS**

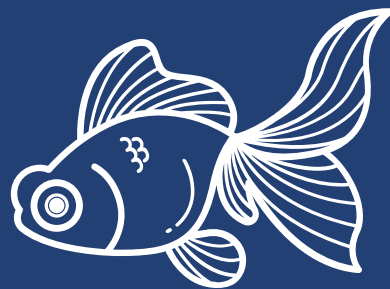
Minimize the extent of any ground disturbance.  
Restore areas using native or desired species.  
Monitor any disturbed sites for invasive plants.



## DON'T INTRODUCE

**BE AWARE OF THESE SOURCES OF INTRODUCTION**

Do not release unwanted pets or animals into the wild.  
Grow non-invasive plants.  
Dispose of invasive plants responsibly.  
Don't move firewood long distances.  
Use products that are free of invasive species.



## SPOT AND REPORT

**YOU CAN HELP!**

Learn how to identify invasive species and how to prevent their spread.  
Report the location of invasive species that you find.

To report invasive species, go to:

[gov.bc.ca/invasive-species](http://gov.bc.ca/invasive-species)

